

Name: _____

Bar Charts

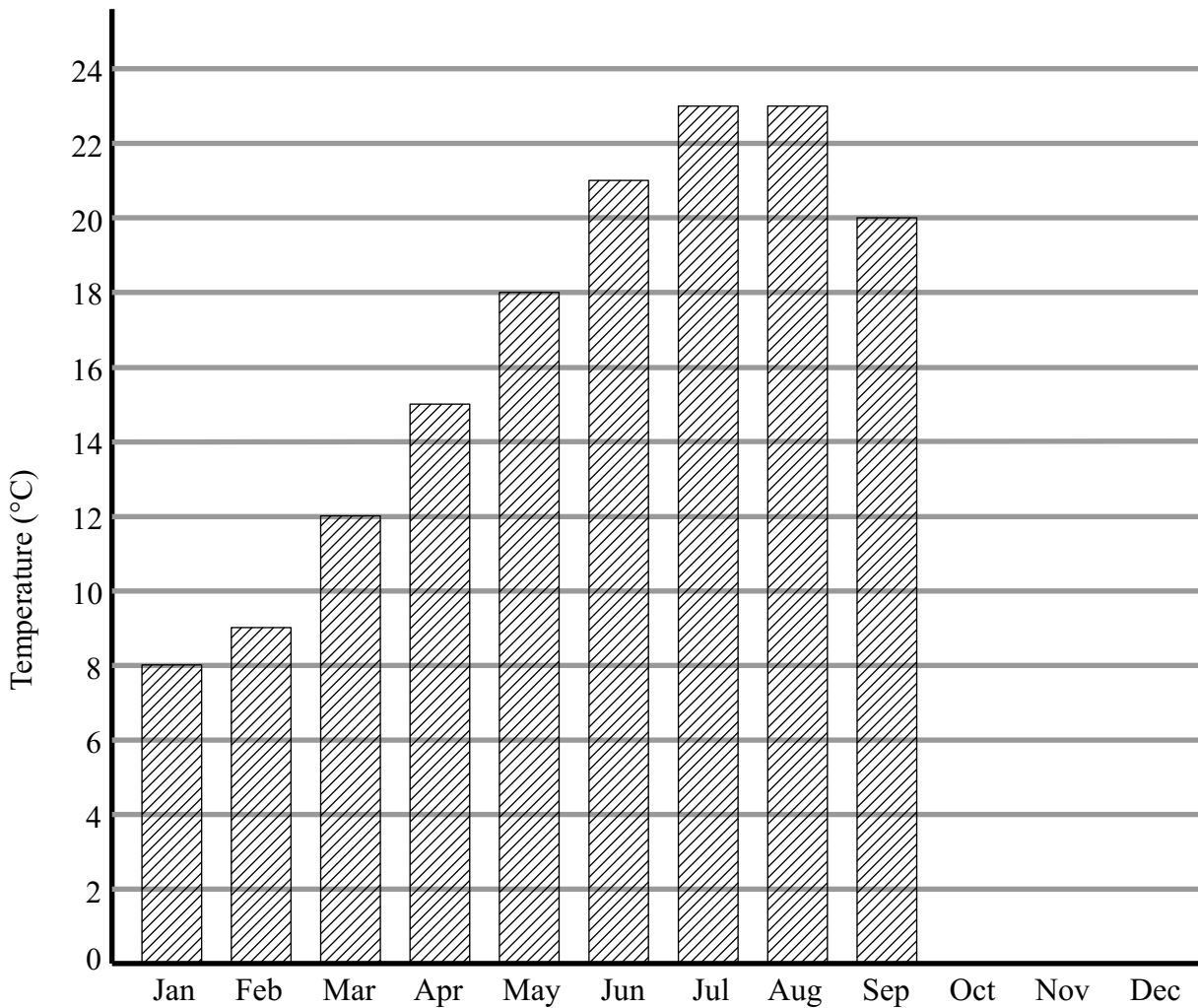
Advice

- Read each question carefully before you start to answer it.
- Try to answer every question.
- Check your answers if you have time at the end.

Remember:

Bar chart and Bar Graph are alternative names for the same thing

1 Here is a bar chart showing the average maximum monthly temperature ($^{\circ}\text{C}$) in Greenwich.



Here are the average monthly temperatures in October, November and December.

October	16°C
November	11°C
December	8°C

(a) Complete the bar chart to show this information.

(2)

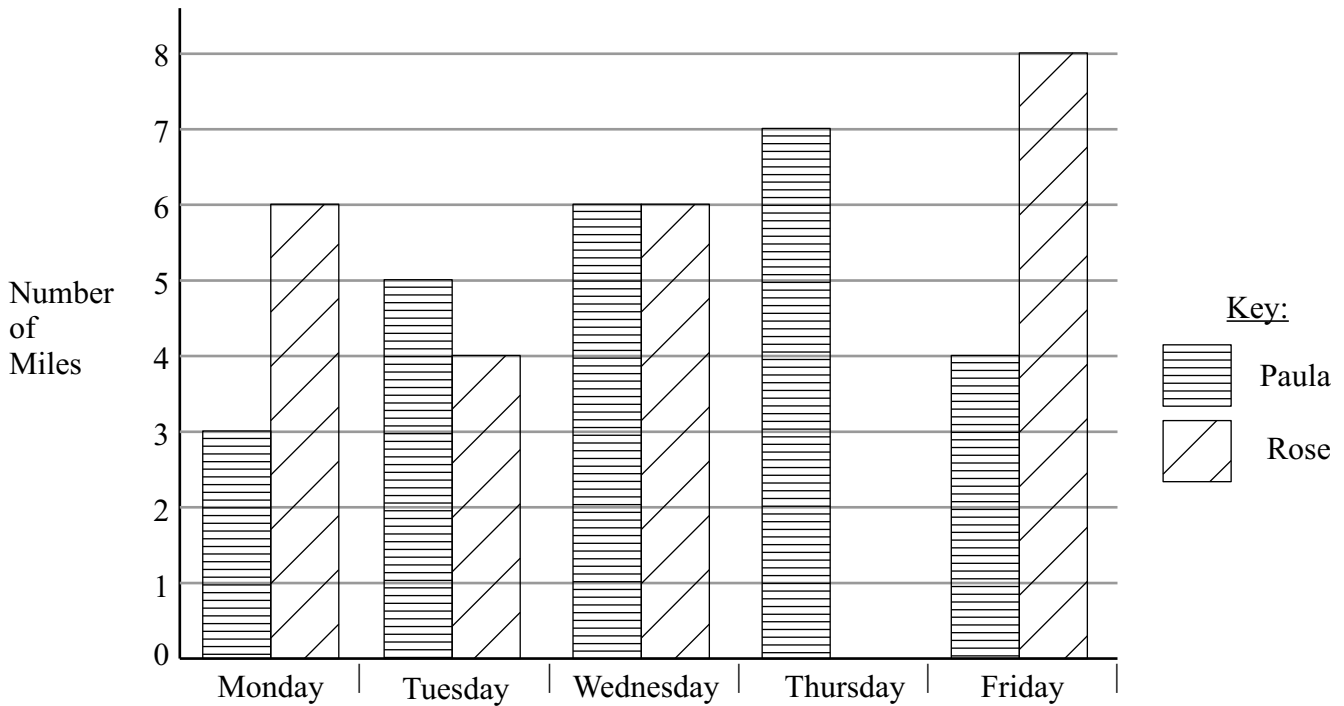
(b) In which two months were the highest average temperatures recorded?

..... and
(1)

(c) Work out the range of average monthly temperatures

..... $^{\circ}\text{C}$
(1)

2 Here is a bar chart showing the number of miles Paula and Rose ran from Monday to Friday in a week.



Rose runs further than Paula on

Monday (a) How much further?

(1)

Rose ran 6 miles on Thursday

(b) Use this information to complete the bar chart.

(1)

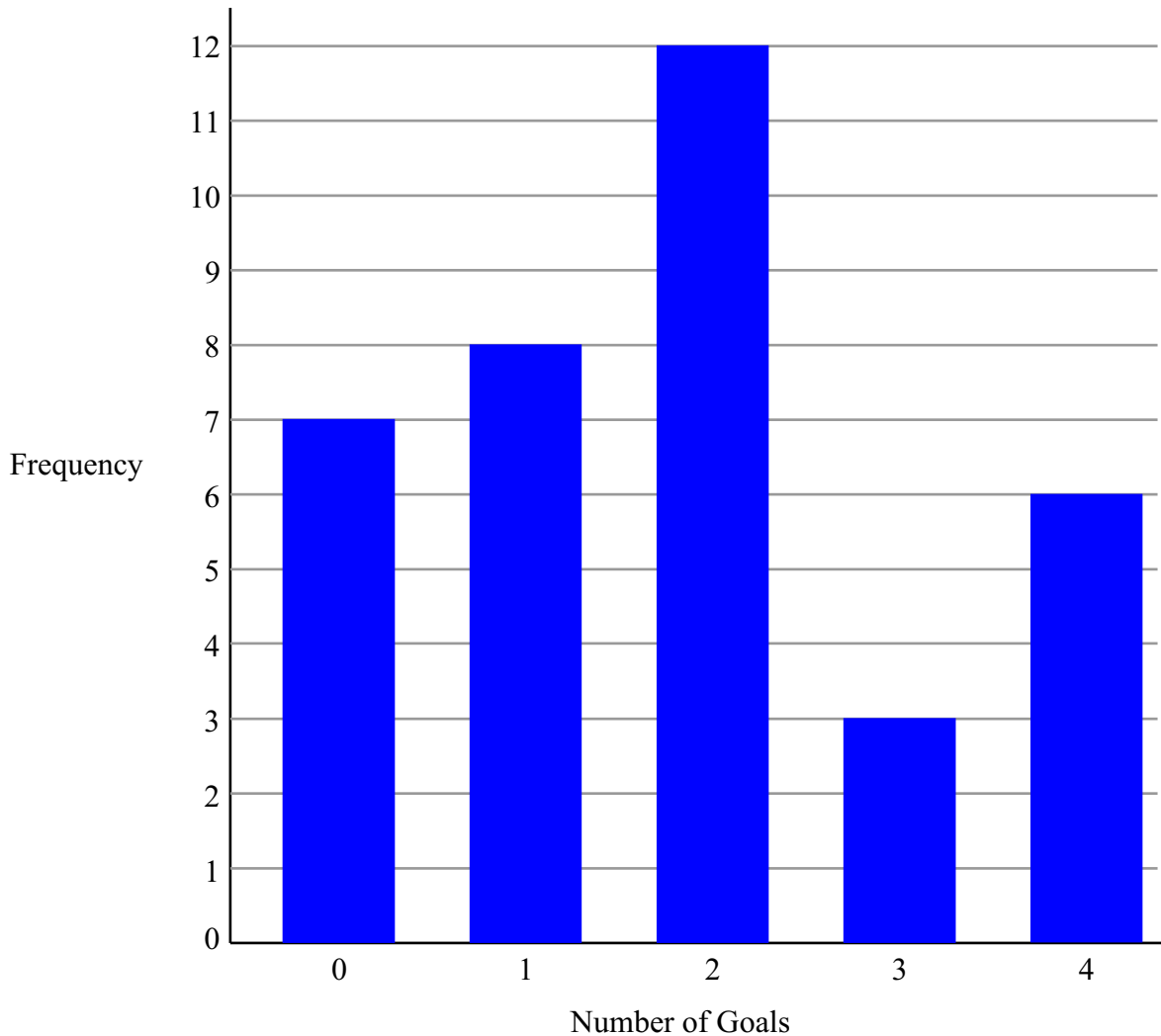
Rose is not going to run on Saturday.

(c) How many miles would Paula have to run on Saturday so that the number of miles she runs from Monday and Saturday is the same as the number of miles Rose runs from Monday to Saturday.

.....

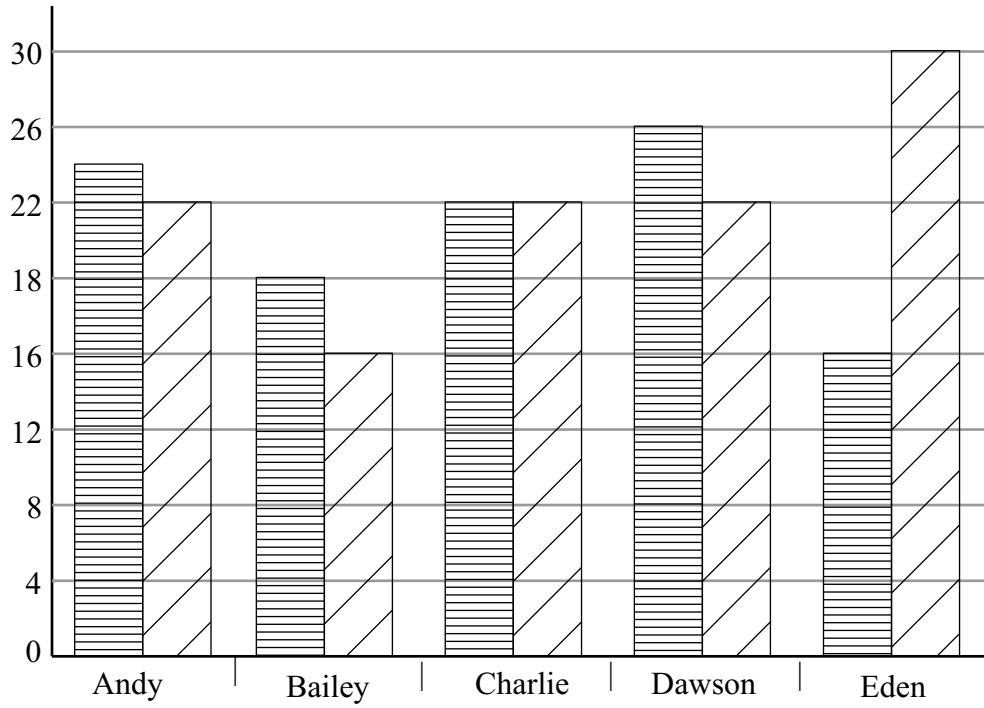
(2)

3 Here is a bar chart showing the number of goals scored in a game by a football team in a season.



- (a) What is the highest number of goals scored? _____
- (b) How many times did the team score 3 goals? _____
- (c) Work out the total number of goals were scored in total by the team. _____
- (d) Label each of these statements either TRUE or FALSE:
- Two goals was the most common number of goals scored by the team.
 - The team always score a goal in each match.
 - It is possible for one player to have scored a hat-trick on 9 occasions.

4 Here is a bar chart showing the scores of five students in their Maths and English tests.



Write down three things wrong with this graph

1.....

2.....

3.....

5 Elsa records the colours of the cars in the school car park. Here is the list of the colours of the 20 cars.

White White Black White Red
Black Red Blue White Blue
Black Blue Black Blue Black
Black Black Blue White Blue

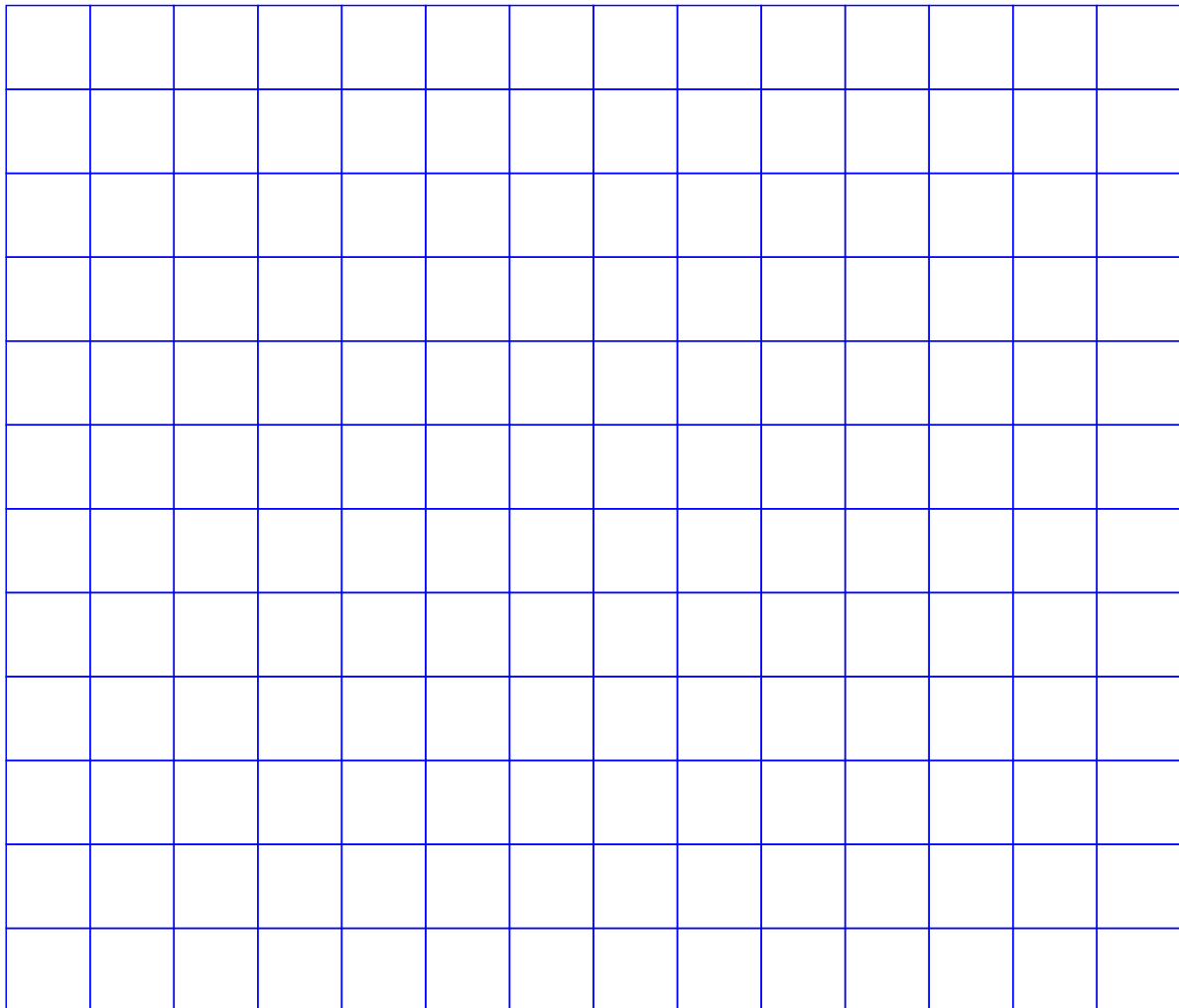
(a) Complete the table to show this information.

	Tally	Frequency
Black		
Blue		
Red		
White		

(2)

(b) Draw a bar chart for this information

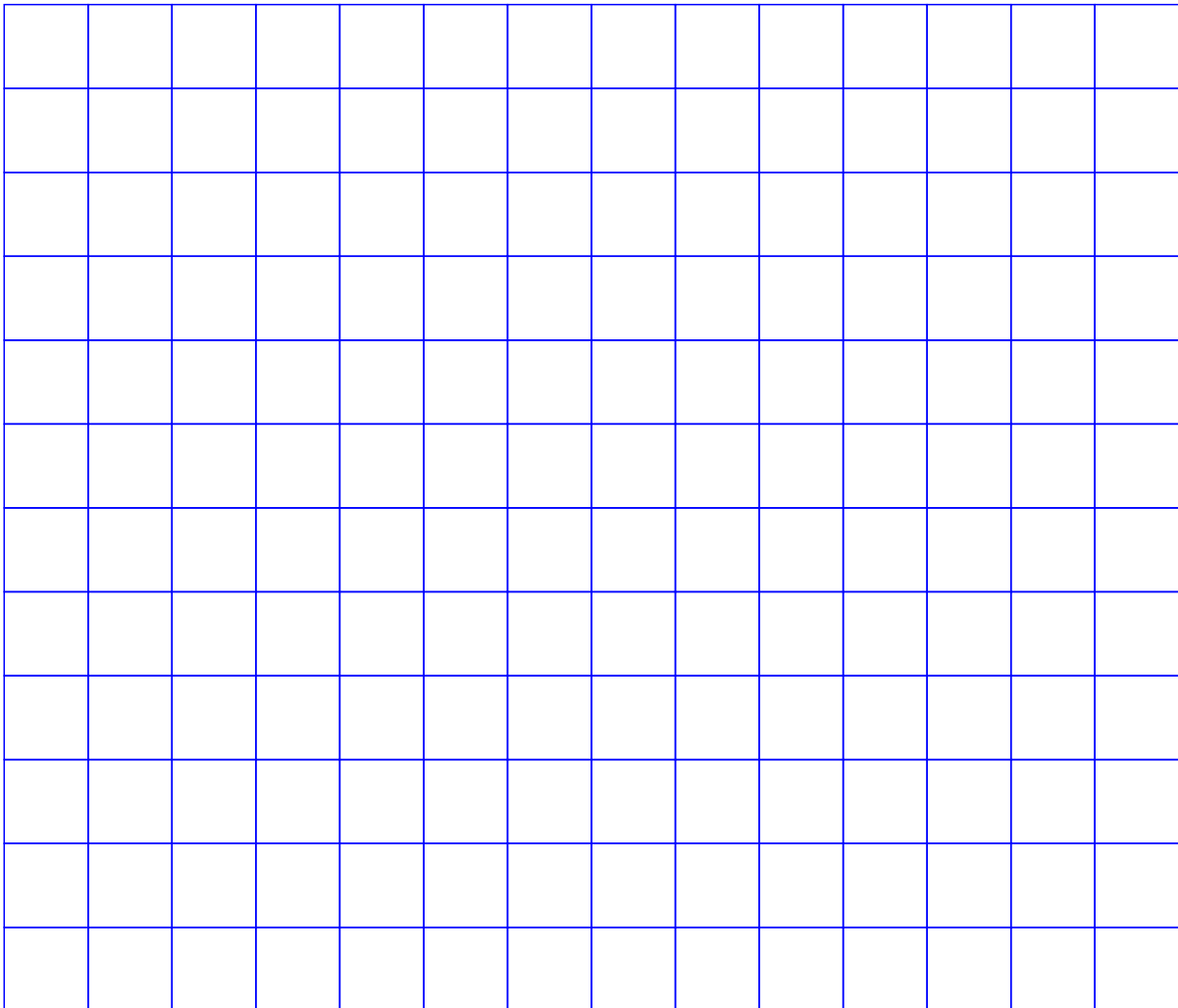
(3)



6 20 students in each of year 7 and year 8 were asked how about their favourite biscuits. The table gives information about the results.

	Digestive	Custard Cream	Shortbread
Year 7	3	7	10
Year 8	4	9	7

Draw a suitable bar chart for this information.



- 7 Some people were asked their favourite activity out of swimming, cycling and running. The table shows the results for males and the results for females.

	Swimming	Cycling	Running
Males	7	6	7
Females	8	7	5

On the grid, draw a bar chart to show this information

